

Provisioning Guide for Microsoft Exchange

Administrative configuration

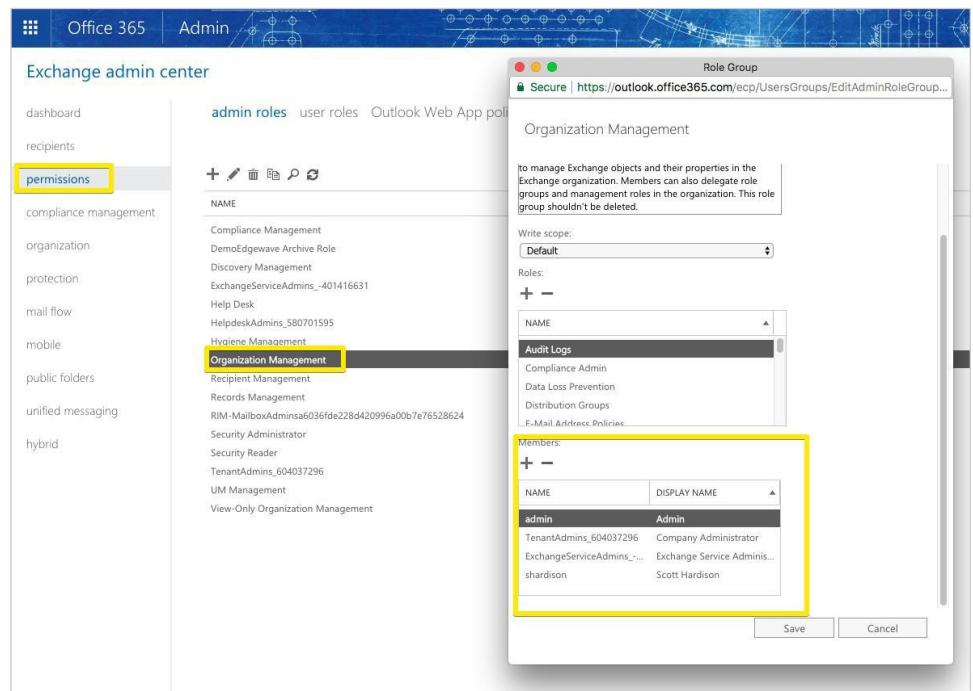
The **GoSecure Titan Inbox Detection & Response (IDR)** system installs the application into the mailboxes. This is done by connecting your GoSecure Tenant to the Exchange environment via EWS and PowerShell.

The account used for this connection needs to have a licensed mailbox and must have certain rights granted to it but does not need to be an administrator. (we suggest you create service type account)

1. Must be a member of the Exchange Organization Management role.
 - This provides the rights to install the application via the Org Custom Apps privilege associated with the Role.
2. Must have full rights to the mailboxes so it can take the following actions:
 - Remove/add messages to the mailbox for quarantine during review.
 - Add the application to the mailbox.
 - Delete submitted message that are found to be malicious.
3. EWS and Remote PowerShell are enabled by default with Exchange Online. See below for instructions on Exchange 2013 and 2016 to make sure the tenant can connect.

Adding the account to the Organizational Management role

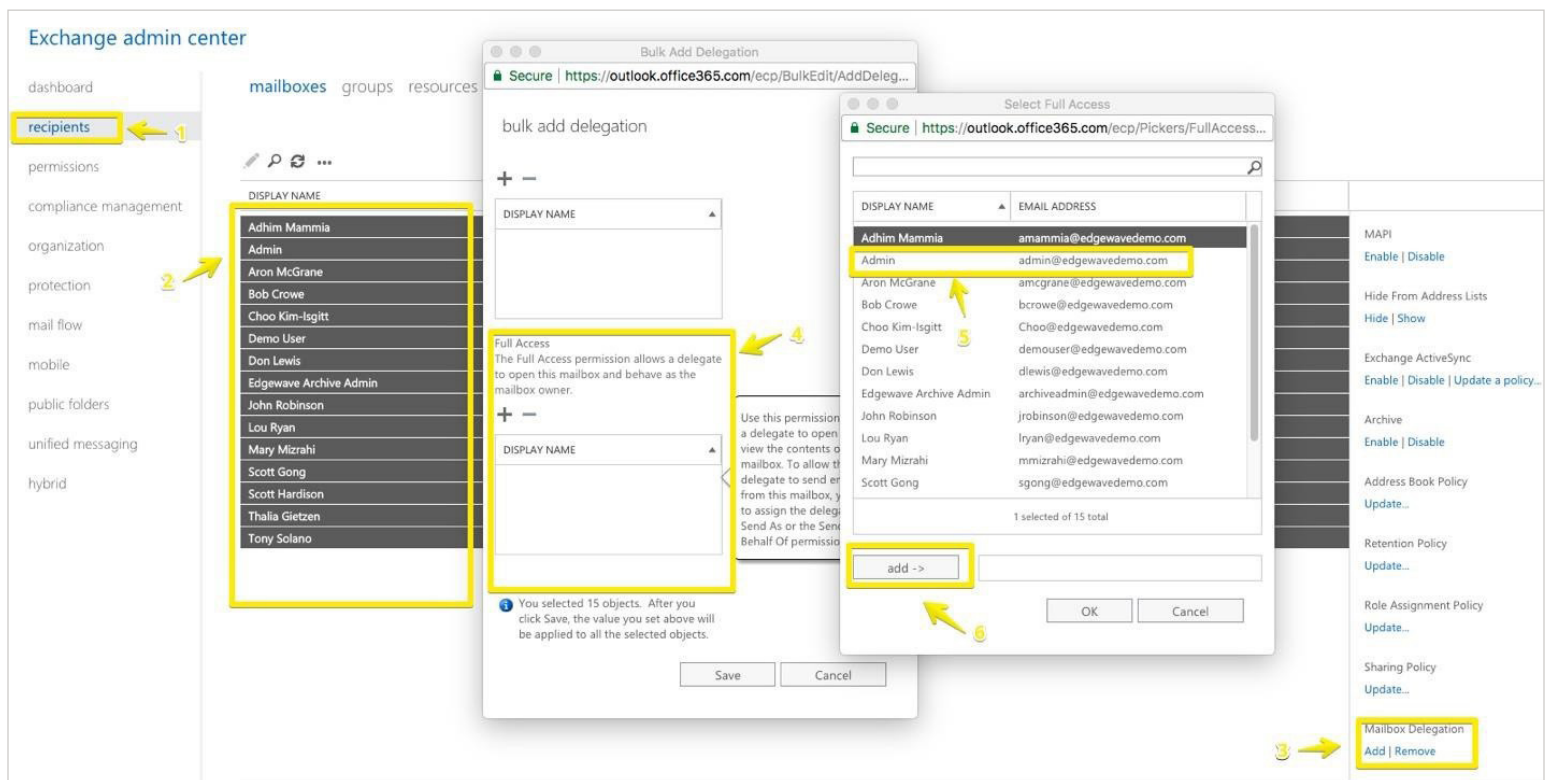
1. Open the Exchange Admin Center
2. Select the Permissions page
3. Under Admin Roles Select the Organization Management role hit the Edit Button
4. In the Members section select the + sign and add the user account



Provisioning Guide for Microsoft Exchange

Adding full rights to the mailboxes

1. Open Exchange Admin Center under Mailboxes on the Recipients Page
2. Highlight the mailboxes you want to delegate the privilege to. (Select all active mailboxes)
3. On the lower right side select the Add button under Mailbox Delegation
4. In the new window Bulk Add Delegation go to the Full Access section and select the + button.
5. Select the admin account used for the Tenant connection hit the Add button, then OK and Save.



Add impersonation rights in Exchange admin center (EAC)

1. Open Exchange admin center:
 - In Office 365: log in to your Microsoft Office 365 admin center (Office 365 admin center) as an admin and choose **Admin centers** > **Exchange** from the menu on the left.
 - In Exchange 2013 and 2016: log in to **Exchange admin center** (<https://localhost/ecp>).

Provisioning Guide for Microsoft Exchange

2. Go to **Permissions > admin roles** (Fig. 1.) and edit the **Discovery Management** role by double-clicking it:

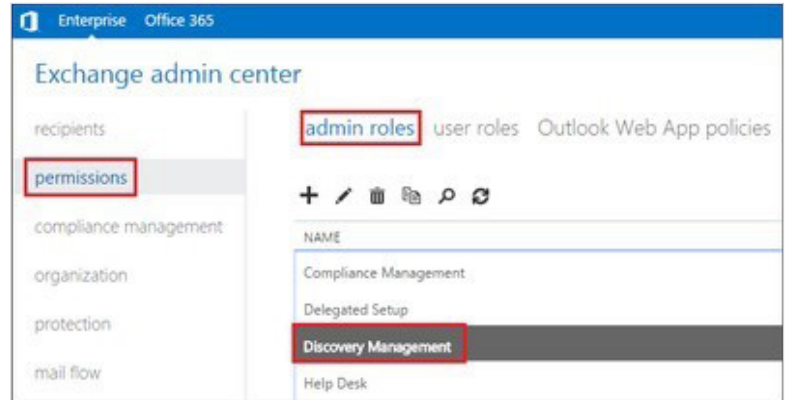


Fig. 1. The Discovery Management role in EAC.

3. Add the role **ApplicationImpersonation** and add your admin user as the group member (Fig. 2.).

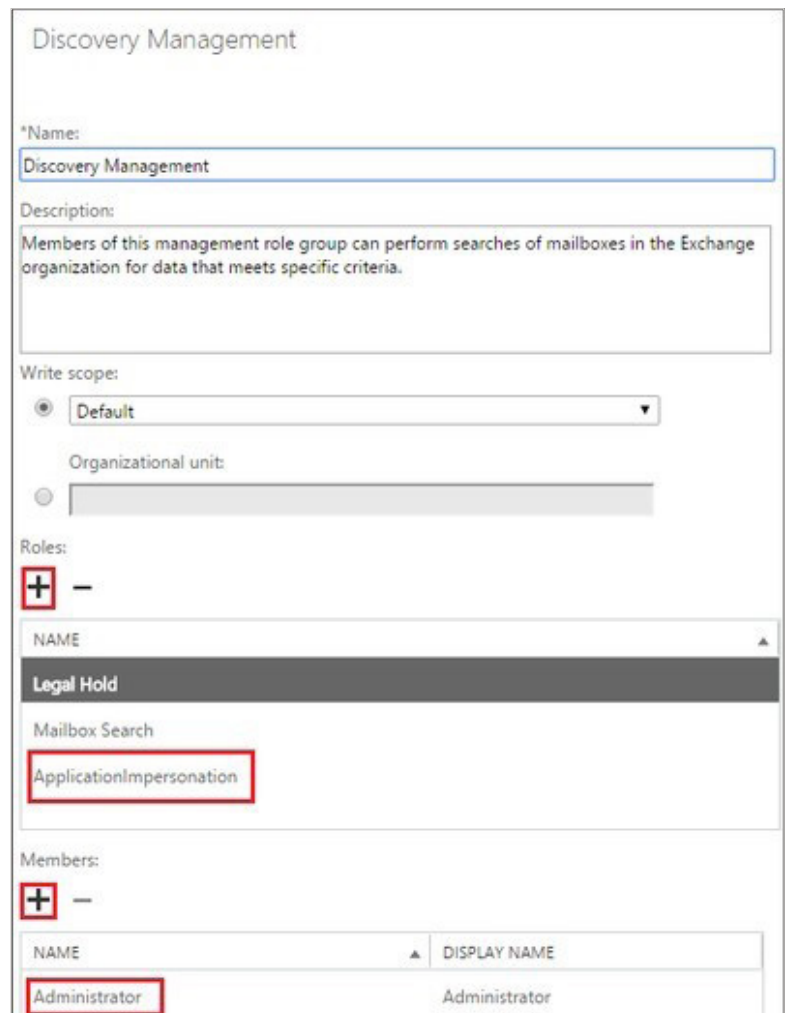


Fig. 2. How to add the right roles and users.